

Case Study - TRACS Care



Sites: Oakhill House, Swansea.

Role: Architectural Design & Planning, Project Management & Contract Administration.

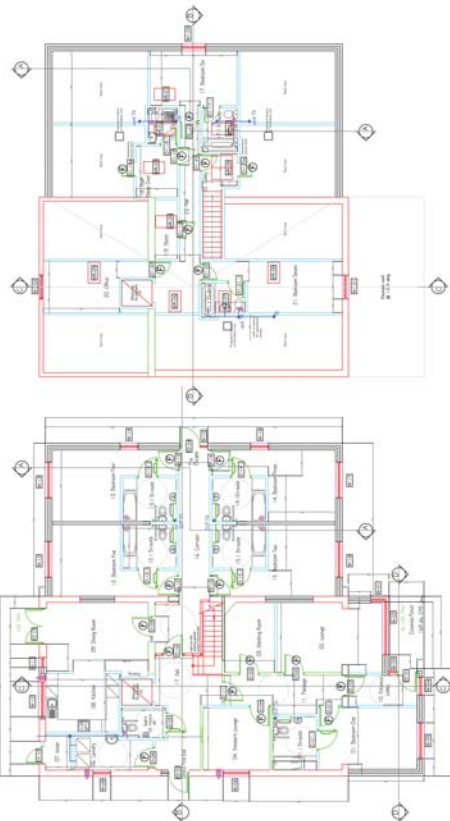
Project Brief: To design a residential care home for adults with acquired brain injury providing full disability access on multiple levels to include 7 bedrooms with en suite bathrooms and staff accommodation. Scheme includes accessible landscaping, terracing and vehicular access.



The Front Facade

‘Tracs retains the essential homely feel that is a key element in all of our homes, but has been designed and planned, using the most up-to-date disability aids to ensure that clients lives and those of the support workers, are made as easy as possible.’

Eric Milliard, Tracs Care Home



Original Property & Site



Accessible Landscaped Terrace & Garden

